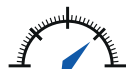


## Differential Pressure Sensor

**PX-2722 Series**



High Resolution



High Speed  
Analogue Output

## Description

The PX-2722 pressure sensor is equipped with a welded stainless steel measuring element on both sides. Extensive ageing measures ensure excellent long-term stability. The measuring signal is processed analogously, linearised and temperature-compensated over the entire range of use.

### Pressure Ranges (FRO) - Differential

100 mbar to 3.5 bar (any zero based range between)  
Bi-directional from  $\pm 100$  mbar

### Overpressure

200 / 400 % depending on pressure range (FRO)

### Output Signal

Current 4 to 20 mA (two-wire)

**Load Impedance** > 5 kOhm

### Measurement Performance

Valid for Pressure Ranges  $\geq 0,5$  bar

### Total Error Band within Operating Temperature Range

(includes non-linearity, hysteresis, repeatability,  
zero and span settings, thermal shift on zero and span)

Standard  $\leq 1,5$  % FRO  
optional  $\leq 1,0$  % FRO  
optional  $\leq 0,5$  % FRO

### Stability

$\leq 0,2$  % FRO per year (typically)

### Response Time

<1 ms

### Zero and Span Setting

Digital adjustable, optional

### Operating Temperature Range

$-40$  °C to  $+125$  °C

### Supply Voltage (V<sub>S</sub>)

8 bis 32 VDC

### Current Consumption

$\leq 5$  mA

### Material of Wetted Parts

1.4404 und 1.4435

### Electrical Connection

6-pin bayonet MIL-C26482  
high temperature shielded cable  
Plug M12x1

### Pressure Connection

M10x1 male length 12 mm, 80° internal cone

### Protection Rate

Depending on mating connector

### Weight

135 g, app.

### EMC

12 V/m 80 MHz – 2 GHz to DIN EN 61326 (A)

### Vibration

DIN EN 60068-2-64 Grade 1

## Dimensions (ca. mm)

