

NSF-Approved Beverage Meter



DDM
sensor solutions

The distributor
of your choice!



IDEAL FOR

- Drinks dispensing
- Beer monitoring
- Cooling equipment
- Semiconductor plant
- Food and beverage
- Batching



FEATURES

- NSF-Approved for use in food and beverage production; suitable for low viscosity liquids
- Low cost
- 4.5 to 24Vdc
- 10 bar rating
- Compatible with $\frac{3}{8}$ " John Guest style fittings
- IP65
- 0.1% repeatability
- 0 - 70°C Max

Standard Materials of Construction

Body and cap	- PVDF
'O' Ring seal	- Viton™
Magnets	- Over-moulded
Bearings	- Sapphire

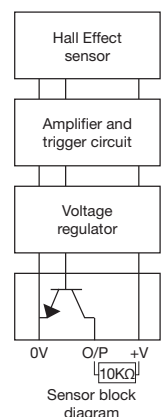
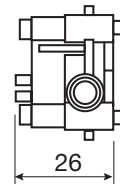
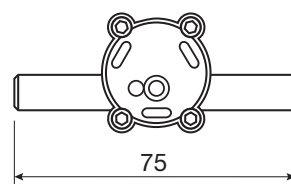
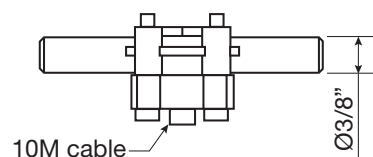
This NSF-Approved mini turbine flowmeter is designed specifically for the beverage dispensing industries, including coffee, beer, wine, spirits and soft drinks. The low-cost, high performing Beverage flowmeter has a flow range of 0.6 up to 10 litres per minute. Composed of totally non-metallic wetted components, the Beverage meter is the ideal choice for metering food-based products and ultra-pure water. The standard inlet tubes are $\frac{3}{8}$ " push on pipe connectors and standard cable lengths are 2m or 10m. Alternative options are available for OEM applications. The sapphire bearings give long life and reliability, the body is moulded in PVDF and the 'O' ring seal is Viton™.

At the heart of the meter is a precision turbine that rotates freely on robust sapphire bearings and contains over-moulded magnets that are detected through the chamber wall by a Hall effect detector. The output is a stream of NPN pulses that are directly interfaced with an electronic display instrument such as Titan's Pulsite® Solo.



TECHNICAL SPECIFICATIONS

Model (Ordering Code)	Flow range L/Min	Linearity % FSD	Typical Freq. Hz.	Approx. 'K' Factor
300-010	0.6 - 10	1.0	235	1420
Weight	0.150kg (including cable)			



TITAN ENTERPRISES LTD.

Coldharbour Business Park, Sherborne, Dorset DT9 4JW

Tel: +44 (0)1935 812790

Email: sales@flowmeters.co.uk

Web: www.flowmeters.co.uk

For reference only; for latest information contact your local distributor.

Distributor: DDM GmbH & Co. KG

Phone: +49 661 967 962-0 Email: info@ddm-sensors.de Web: www.ddm-sensors.de

08/24